

CAANMAR PENTA INTERNATIONAL CONTRACTING LLC

“TOGETHER WE CAN”

- Established in 2014 as Building Contracting Company in Dubai
- With a solid vision and strong technical & engineering workforce, we have acquired a reputation for quick responses to customer needs and have created a niche in the construction Industry
- The corporate philosophy emphasizes the recognition that the client's needs are paramount and success is only achieved through continued attention to the client by providing competitive and quality services.
- Experience in projects in Jebel Ali Freezone, DMCC and Dubai Municipality areas.

- **OUR MISSION**

Commitment to building long-term relationships with our clients by implementing strict regime of Quality and HSE policies and procedures at all levels and across all departments to ensure compliance with regulations and industry benchmarks.

- **OUR VISION**

We want to become the preferred Construction Partner of UAE who delivers best-in-class solutions to meet and exceed customer expectations.

- Building Contracting
- Beach Profiling
- Structural Steel Buildings
- Villa Construction
- Excavation and Back filling
- Interlocking Pavement
- Tensile shades
- Concrete Works
- Block casting
- Chain Link Fencing
- Car Parking



We are forerunner in the following areas:

- Construction of Factory, Warehouse, Cold Stores, Workshop Sheds, Showrooms, Offices, Labor Accommodation and all types Renovation, General Maintenance
- Design, supply, Installation & commissioning of Maintenance of all types of A/Cs.
- Obtaining DEWA approval to design, installation, commissioning of all types of Electrical works.
- All types of interior fit out works including Partition, False Ceiling & Floor Finishing. External & Internal Painting – Texture spray, Epoxy Painting and all types of decorative works.

Operation Areas:

We are capable of undertaking projects in the jurisdiction of following Authorities

- Jebel Ali Free Zone
- Dubai Municipality
- Technopark
- DMCC
- Dubai Investment Park



Paramed International Fzco Jebel Ali Freezone-South

Completed

Plot Area –	89,000 Sq.ft
Office Area –	6,200 Sq.ft
Warehouse -	34,800 Sq.ft





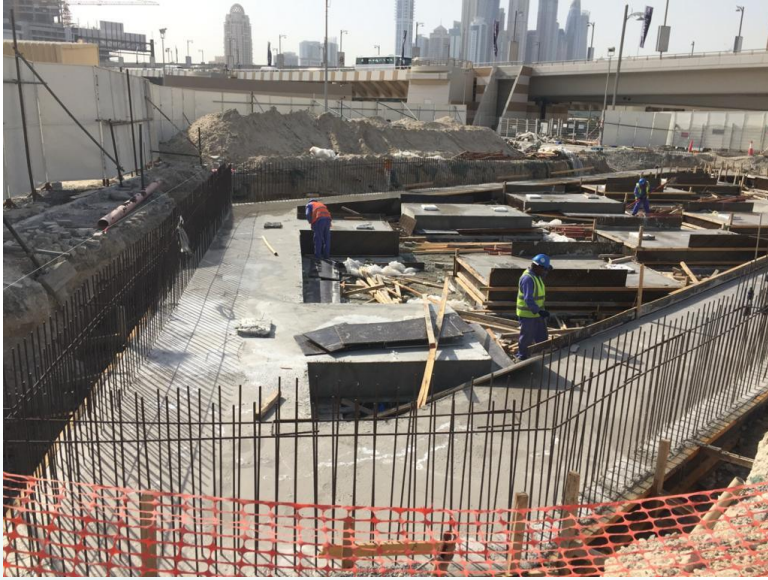
We undertake complete turnkey projects inclusive of:

- Civil Works
- Supply & Erection of the steel building
- Electrical Works
- Mechanical Works (Plumbing, HVAC & firefighting works)
- Painting works
- Other works such as Interlock paving, landscaping.



**Civil work sub-contractor for
SPECON-COBRA-AASA Joint venture
for the 3rd Ruwayya Substation for
DEWA.**

**The scope included all underground
services, LV room, Pump room, Guard
Room, Cable ducts, backfilling and
interlock pavement**



SS Lootah – Nakheel PJSC
The gas tank and control room for gas supply for the entire Palm Jumeirah.

Civil works included building of new control room and tank foundations.



Supply and spreading of Silica sand for beach





Project Details

Completed Projects:

CLIENT	PROJECT	LOCATION
PARAMED INTERNATIONAL FZCO	OFFICE + WORKSHOP – Ground+1	JEBEL ALI FREEZONE
NAKHEEL PJSC	SHADE STRUCTURES	JUMEIRAH VILLAGE TRIANGLE
NAKHEEL PJSC	INFRASTRUCTURE WORKS	INTERNATIONAL CITY
NAKHEEL PJSC	CHILDRENS PLAY AREA	GARDEN VIEW VILLAS
NAKHEEL PJSC	CHAIN LINK FENCE SYSTEM	JEBEL ALI VILLAGE PARK
DUTCO BALFOUR BEATTY	IRRIGATION WATER TANK	CITY WALK
ARISTON	WAREHOUSE MODIFICATION	UMM RAMOOL
LIEBHERR MIDDLE EAST	CAR PARKING SOLUTION	JEBEL ALI FREEZONE
CULLIGAN MIDDLE EAST FZE	WAREHOUSE MODIFICATION & INTERLOCK PAVEMENT	TECHNOPARK
GEO HARBOUR MIDDLE EAST CONTRACTING	INFRASTRUCTURE IMPROVEMENT	DEIRA ISLANDS
NAKHEEL PJSC	INFRASTRUCTURE IMPROVEMENT	JUMEIRAH ISLANDS
HAMPTON PROPERTY DEVELOPER PVT LTD	EXTERNAL INTERLOCK WORKS	JEBEL ALI IND AREA
NAKHEEL PJSC- THE POINTE	MEP INFRASTRUCTURE	PALM JUMEIRAH

Completed Projects:

CLIENT	PROJECT	LOCATION
LOOTAH BC GAS	GROUND+1 BUILDING, GAS PIPELINE EQUIPMENT FOUNDATIONS	PALM JUMEIRAH
SPECON LLC	EARTHING TRANSFORMER BUILDING, CABLE PULL PITS, DUCT BANKS, UNDERGROUND SERVICES, BOUNDARY WALL	AL RUWAYYA
HYUNDAI- AASA Middle EAST	CIVIL WORKS – SUBSTATION AND OTHER UTILITY BULDINGS -DUBAI EYE	BLUEWATER ISLAND
ARABIAN TRUCKS FZCO	STRUCTURAL STEEL ERECTION	JAFZA
TROUVAY & CAUVIN GULF	STRUCTURAL STEEL ERECTION	JAFZA
INTERNATIONAL TEXTILES	STRUCTURAL STEEL ERECTION	JAFZA
METITO OVERSEAS	SOLAR PANEL INSTALLATION N ROOF	TECHNOPARK
INTERNATIONAL RUBBER	SOLAR PANEL INSTALLATION N ROOF	JEBEL ALI IND AREA

Ongoing Projects

CLIENT	PROJECT	LOCATION
NAKHEEL PJSC	PLAYGROUNDS MAINTENANCE	JUMEIRAH PARK, JUMEIRAH ISLANDS, JUMEIRAH VILLAGE TRIANGLE, JUMEIRAH VILLAGE CIRCLE, DISCOVERY GARDENS, VENETO, AL FURJAN
NAKHEEL PJSC	REFURBISHMENT OF KIDS PLAYGROUNDS AND SURROUNDING AREAS	AL FURJAN
AL SHAALI GROUP	CONSTRUCTION OF BASEMENT + GROUND+ FIRST FLOOR VILLA	AL KHAWANEJ

Preferred Sub-contractor/ supplier list

Structural Steel	AASA Middle East Contacting Co LLC	ONYX Industries
Roof Sheet and Cladding	Roofings Middle East LLC	Kingspan / Rigidal
Fire Fighting	Safety Line Safety Equipment Installation LLC	NAFFCO
GRP Tanks	EXTRACO	
Zero Tolerance concrete Flooring	Fars Al Mazroui Contracting LLC	
Concrete Ready Mix Supply	Unimix	Tremix
Laboratory Testing	Advanced Laboratory Center	Al Hoty Stanger
Survey	Emirates Nortech Surveys	
Reinforcement Steel	Seven Seas Steel	
Roof Exhaust Fans	Robertson Thermovent Fzc	

Our Clients

We enjoy working with a world-class list of clients

NAKHEEL



AFFILIATE
OF EMAAR
INDUSTRIES
& INVESTMENTS
(PVT) JSC.



Culligan

better water. pure and simple.®

TARGET



AMPACET
Plastics Reimagined™

LIEBHERR

SPECON

GH GEOHARBOUR
MIDDLE EAST CONSTRUCTION LLC



Our Vendors:



AFFILIATE
OF EMAAR
INDUSTRIES
& INVESTMENTS
(PVT) JSC.



SEVEN SEAS STEEL INDUSTRIES
Reinforcing Your Vision



بولي فاب
لصناعة البلاستيك ذ.م.م.



HUSSAIN MOHD. ABBAS
BLOCK FACTORY LLC



فارس المزروعى للمقاولات ذ.م.م.
Fars Al Mazrooei Contracting L.L.C



Manpower	Nos
Project Managers	1
Civil Engineer	1
Electrical Engineer	1
Electrician	2
Civil and Electrical Foreman	2
Skilled and Unskilled Workers	20

Machinery	Nos
Bus, Vans, Pickups, Trucks	8
Generator	5
Cabins	3
Scaffolding and Other equipments	Adequate